

You should have already collected keys for the property before proceeding to this step. If you don't have keys and need help please phone +61493 173 122

Check-in Instructions



Unit 201/100 De Burgh St, Lyneham
2602

‘The Sullivan Building’

Apartment Level: 2

Parking Level: B3

Host: Citi Stayz - Sarah Singh

Once you have got the keys if you don't require parking, please follow instructions below, if you do require parking keep scrolling down for parking details.

Step 1:

You should of retrieved a set of keys that look like the below



Step 2:

Enter through the door below that says '100 De Burgh' as per below:



Your remote will act as a swipe/fob to activate any external doors and elevators. Once inside the door scan your remote and select level '2' then it is room number **201**

If you require parking keep scrolling.

CARPARKING INSTRUCTIONS

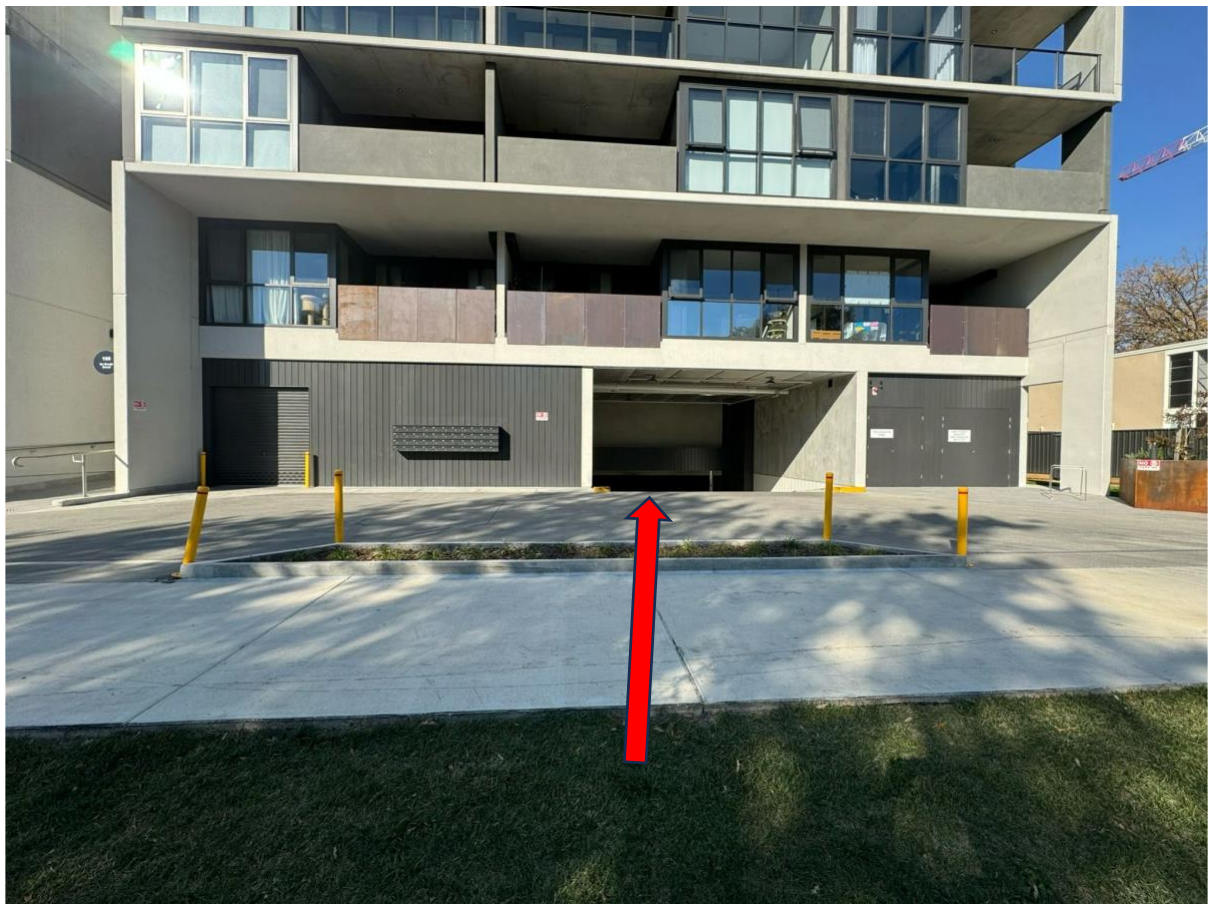
Youtube video link for parking:

<https://youtu.be/9rpxolXoq0o>

2nd spot on the video. Step by step instructions below.

Step 1

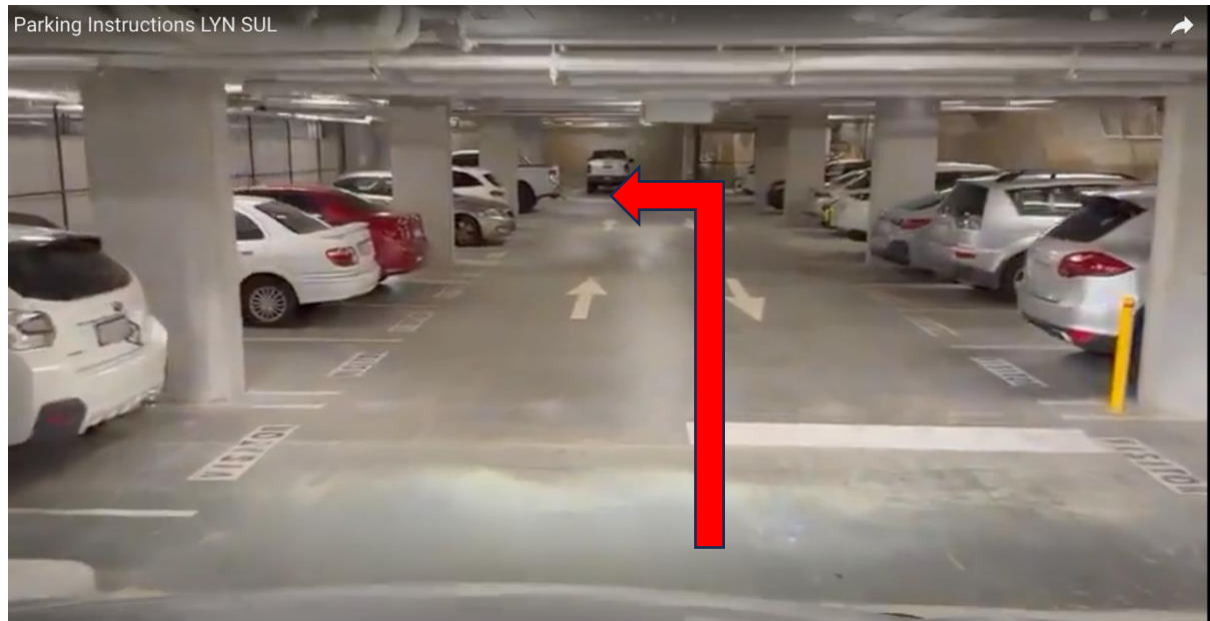
You will enter the car park at 100 De Burgh Street Lyneham



Use the buttons on the remote to open the door.

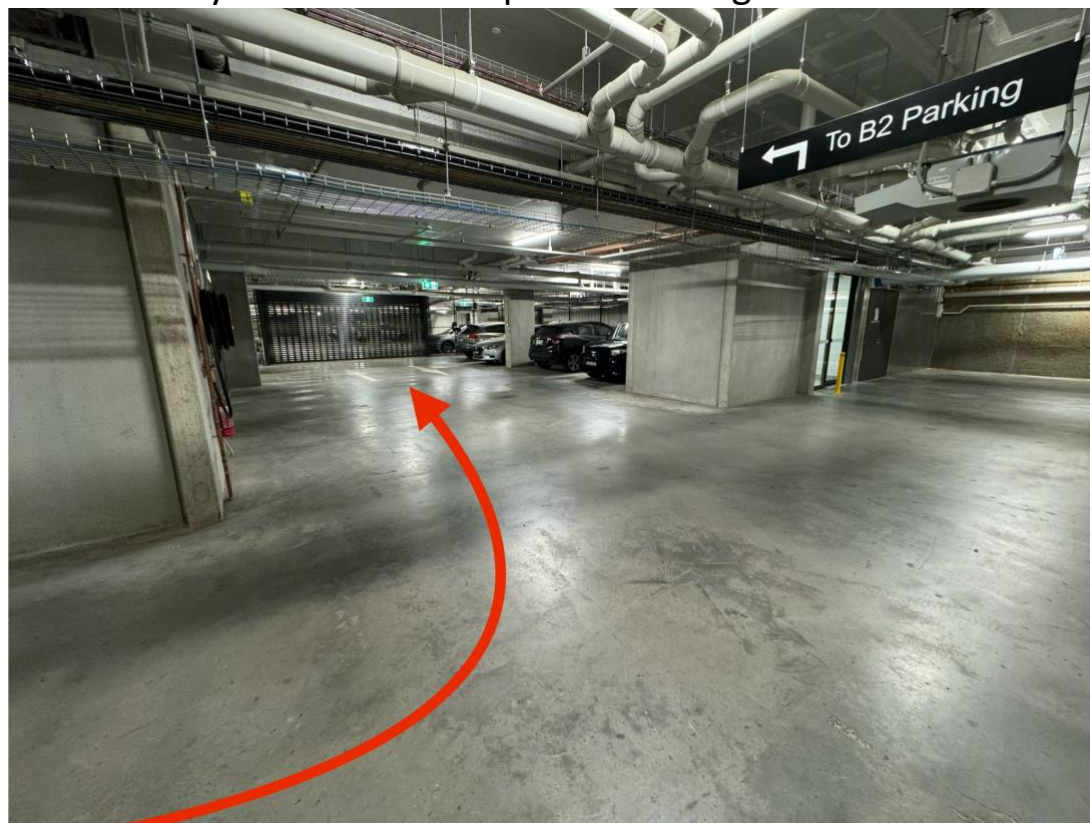
Step 2:

Once down the ramp go all the way to the end and turn left



Step 3:

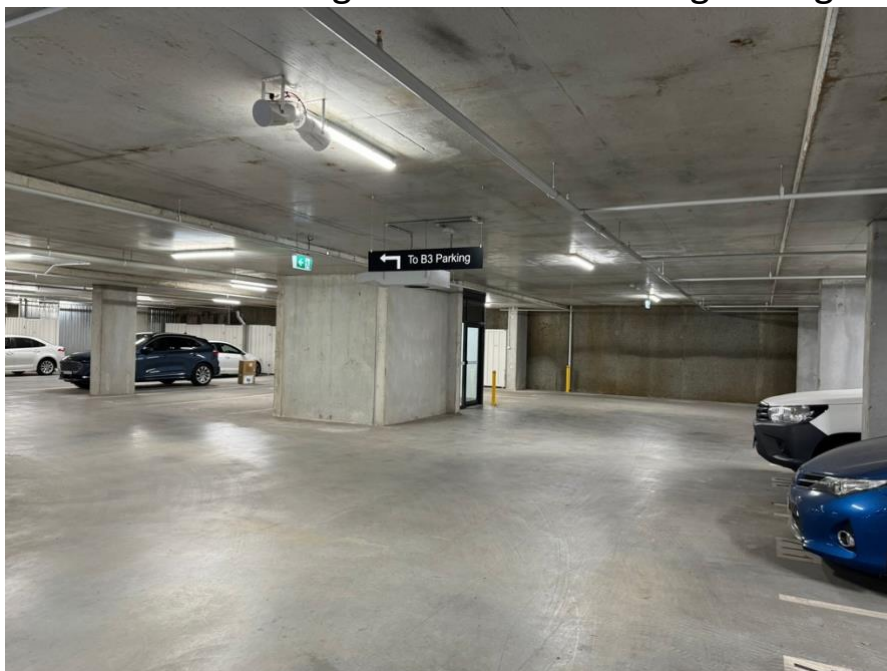
Follow the signs to B2 parking and go down the second ramp use the buttons on your remote to open the next gated door.



Step 4: Continue to follow the sign that says 'To B2 Parking' You will go down a third ramp.



Step 5:
Once down the ramp take an immediate left and go all the way to the end and turn right. You are following the signs to go down to B3



Step 6:

Once down the final ramp take an immediate left and go all the way to the end and turn left. You will take one final left turn after the door below.



Your allocated parking will be on the right-hand side as per the picture below and the elevator to use is indicated in the picture below.



The apartment is located on level '2' please scan you remote on the elevator to activate.

Enjoy your stay ☺ and contact us if you have any problems at all.